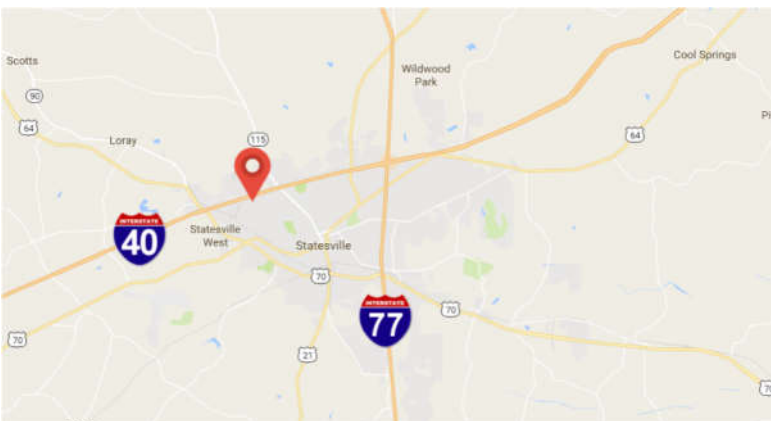
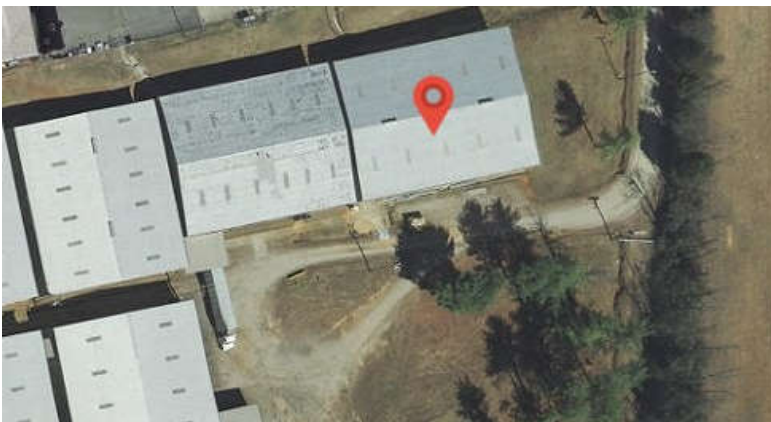




## 1707 Gregory Road



### Property Summary

- > 1707 Gregory Road, Statesville NC
- > 12,500 SF
- > 17'11"-21' Clear Height
- > (1) 12x12 Dock Door (Drive-in opt.)
- > 100% Wet Sprinkled
- > Light Industrial (LI) Zoning
- > 1.3mi to I-40, 3.5mi to I-77

### Contact Us

**Collin Santorine**

Property Manager

(704)872-9105

[CSantorine@NandinaProperties.com](mailto:CSantorine@NandinaProperties.com)