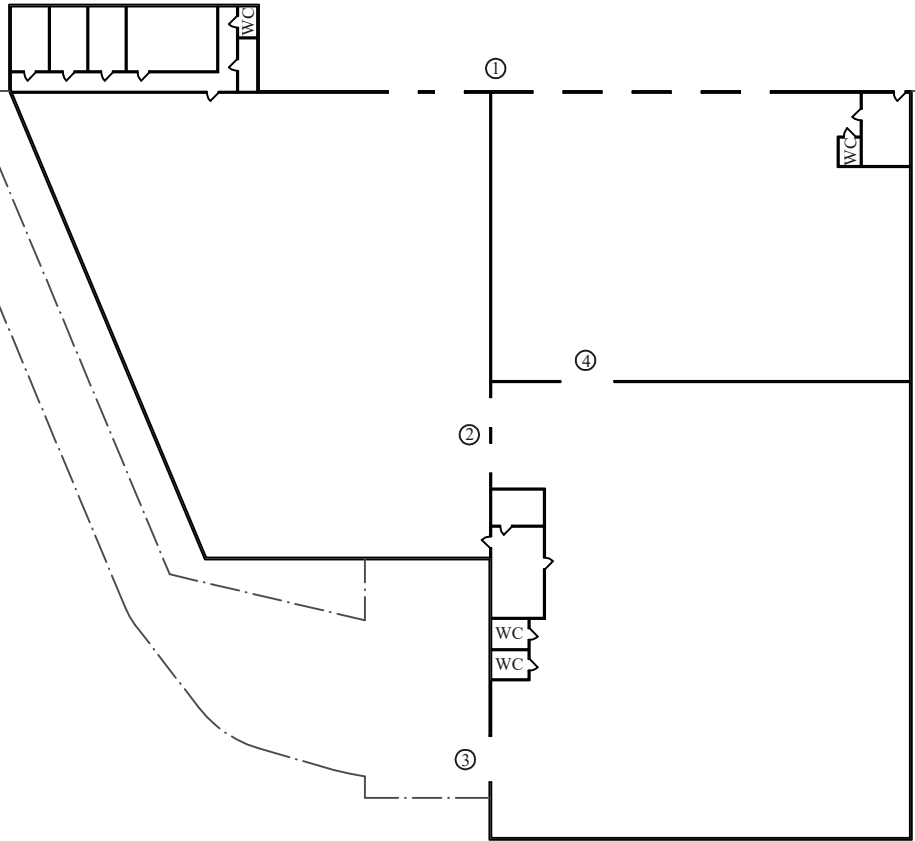


ANNA DRIVE




**Notes:**

- ① (6) 8x10 DOCK DOORS  
(5) WITH LEVELERS
- ② (2) 8x10 OVERHEAD DOORS
- ③ (1) 12x10 DRIVE-IN DOOR
- ④ 14x12 OVERHEAD DOOR

NOTE: THIS DRAWING IS FOR GENERAL PLANNING PURPOSES ONLY. ANY GIVEN SCALE OR DIMENSIONS ARE APPROXIMATE AND SHALL NOT BE ASSUMED TO BE ACCURATE OR PRECISE. CONTACT US TO SCHEDULE A SHOWING IF PRECISE MEASUREMENTS ARE NEEDED.

REV	DESCRIPTION	BY	DATE

 **Nandina Properties**

1911B CLAYTON STREET  
STATESVILLE, NC 28677

ENTITY  
**ANNA INDUSTRIAL  
PROPERTIES, LLC**

PROPERTY  
**116 ANNA DRIVE**

TITLE  
**FLOOR PLAN**

SCALE	DATE	DRAWN
1" = 50'	08/26/2016	JWG
PROJ #	DRAWING #	REVISION
0510	0510-01	

